



European Commission  
Agriculture and Rural Development



# European Network for Rural Development 2007-2013: organisation and specific activities 2008-2009

## (1) Legal framework

Leader subcommittee – 26/11/2008



# Regulation 1698/2005

## Article 67



European Commission  
Agriculture and Rural Development

**A European Rural Development Network for the networking of national networks, organisations and administrations active in the field of rural development (in the framework of RD policy 2007-2013).**

### **Tasks:**

- **Analysis** : Collecting, analysing and disseminating information on RD measures;
- **Good rural development practice**
- **Information** : Providing information on developments in rural areas in the EU and 3<sup>rd</sup> countries;
- **Meeting points** : Organise meetings and seminars on RD at Community level;
- **Expert networks** : Setting up and running expert networks (evaluation of RD policy);
- **Technical support** : Supporting the national networks and transnational co-operation initiatives.



## Implementing rules for organisational structure:

- Commission Decision no 168 of 20 February 2008
  - 1) Coordination Committee
  - 2) Leader Sub-Committee
  - 3) Thematic working groups
  - 4) Evaluation expert committee



# Coordination Committee

- Members:
  - 27 from MS authorities
  - 27 from national networks
  - 12 from EU-wide organisations
  - **2 from Leader sub-committee**
  - 1 from EU-wide LAG-s organisation
  
- Tasks:
  - **Assist** the Commission in the preparation and implementation of network activities;
  - **Coordination** between the EN RD, national rural networks and organisations active in rural development at Community level;
  - **Advise** the Commission on the **annual work programme** of EN RD, contribution to choice and coordination of thematic work;
  - **Propose** the creation of thematic working groups.



## Leader sub-committee

- Composition, 67 members (*same organisations as in the CC, but possibly different nominees*):
  - 27 MS authorities, 27 national networks
  - 12 organisations active in RD
  - 1 EU-wide organisation representing LAGs



# Tasks of the Leader subcommittee

- to contribute to the work of the Coordination committee;
- to advise the Commission on the annual work programme of the EN RD concerning the Leader axis and contribute to the choice and coordination of thematic work in this field;
- to support the Commission in monitoring the implementation of transnational cooperation projects;
- to regularly report to the Coordination committee on its activities.



# Thematic working groups

- Defined mandate, chaired by a representative of the Commission.
- Max 15 members, designated by the Commission, taking into account proposals made by the Coordination committee.
- Regular reporting to the Coordination committee on the subjects covered by their mandate.
- Final report – to the Coordination Committee at max two years after creation



# The evaluation expert committee

- Shall follow the work of the Evaluation Expert Network
- NB:
  - ⇒ Different composition than CC (2 representatives from each national competent authority)
  - ⇒ Different contact point (Evaluation Help desk)
  - ⇒ Different supervision in AGRI (lead: AGRI/L.4)



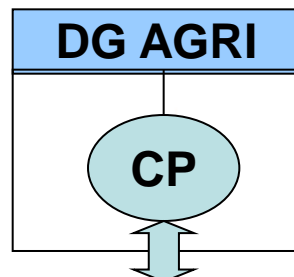
European Commission  
Agriculture and Rural Development



## **(2) The Contact Point of the European Network for Rural Development 2007-2013**



# The CP will be the operational instrument of the network



⇒ Information and communication tools:  
publications, web site...

⇒ Pools of experts to produce  
analysis

⇒ Support to transnational  
cooperation for LAGs

⇒ Coordination with National Networks

⇒ Promotion of the network



# The consortium selected



European Commission  
Agriculture and Rural Development

**An association led by the Group of KANTOR Management Consultants S.A.**

**(Greece)**, including its subsidiaries

- **LRDP KANTOR Ltd – UK,**
- **QWENTES KANTOR S.A. – Belgium,**
- **Kantor Doradcy w Zarzadzaniu Sp. Z o.o – Poland,**
- **KANTOR Management Consultants SRL – Romania and**
- **KANTOR Management Consultants EAD – Bulgaria,**

with subcontractors:

- Hushållningssällskapens Service AB (Sweden),
- IEEP – Institute for European Environmental Policy (UK),
- CIHEAM – Institut agronomique méditerranéen de Montpellier (France),
- Agriculture Science and Engineering Centre of Debrecen University (Hungary),
- Agriconsulting Europe S.A. (Belgium)



# The team of the Contact Point (CP)



European Commission  
Agriculture and Rural Development

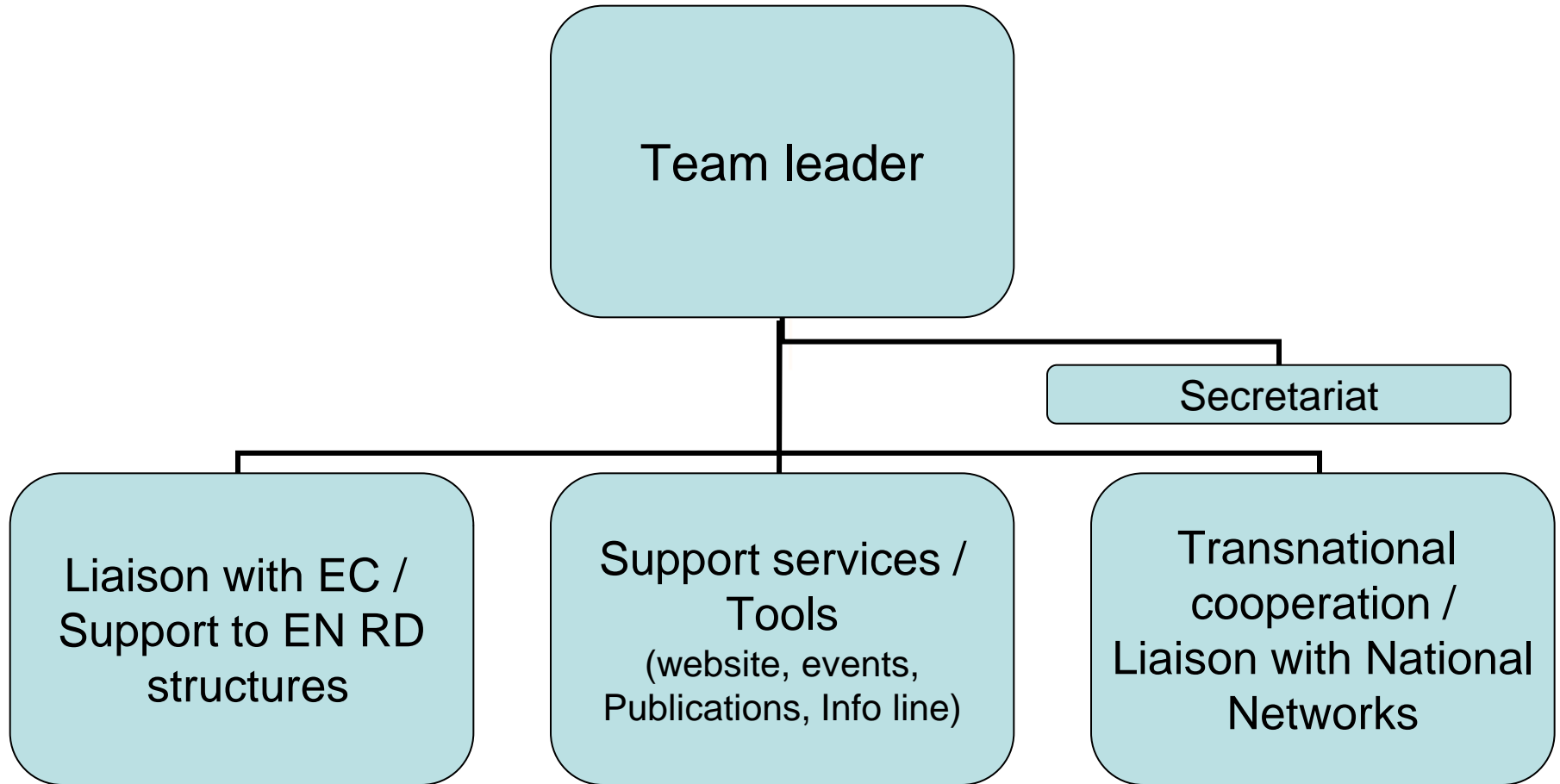
- Brussels based:
  - Offices and info point: Rue du Marteau 81, in close proximity to DG AGRI
  - Meeting room facilities
- Human resources:
  - 21 permanent staff
  - A pool of non-permanent experts
  - A team organised around three groups, each with allocated responsibility for the different services and tools



# The team structure of the Contact Point



European Commission  
Agriculture and Rural Development

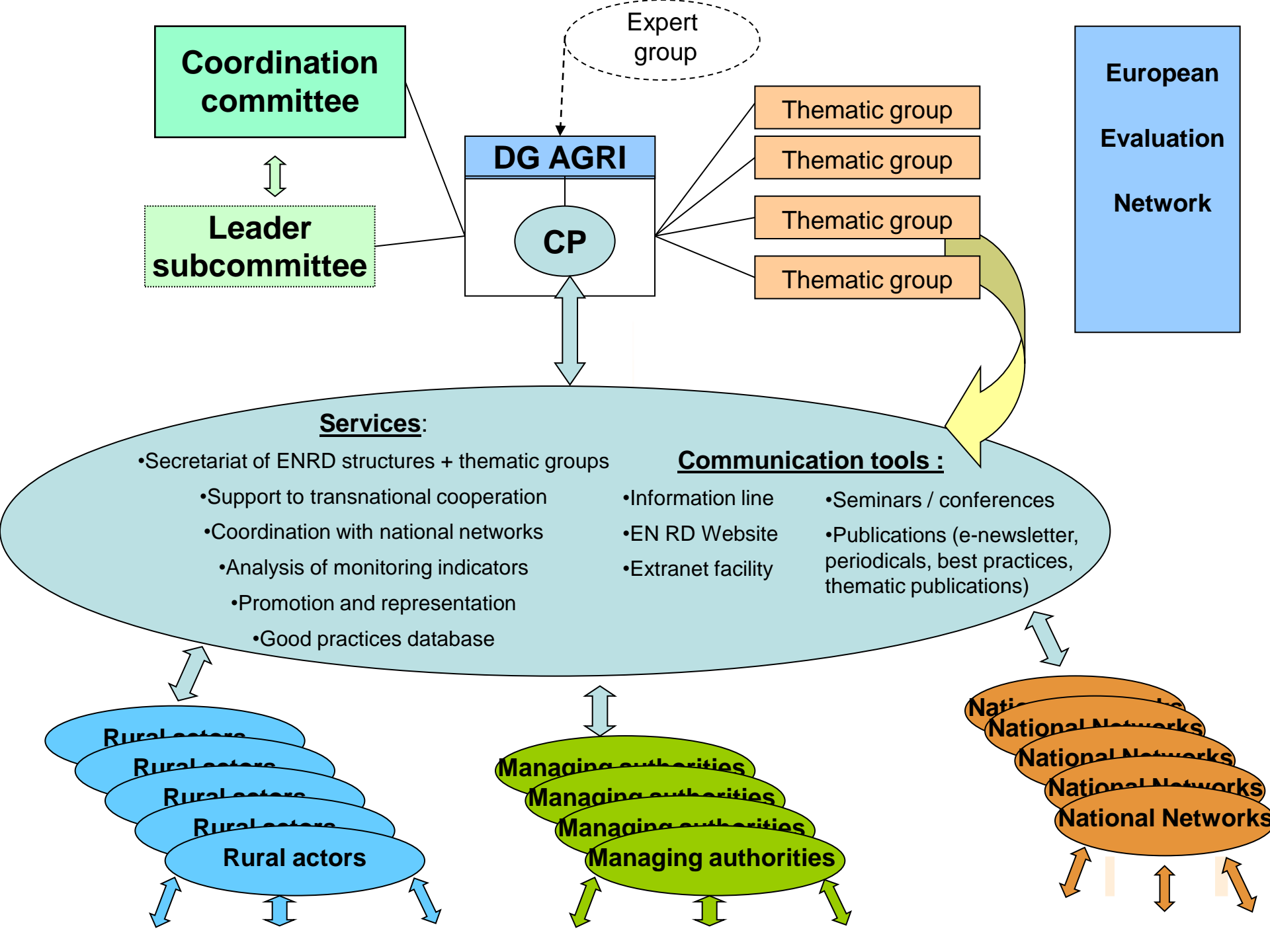




European Commission  
Agriculture and Rural Development



## **(3) Overall structure of the European Network for Rural Development**





European Commission  
Agriculture and Rural Development



## **(4) The proposed specific activities** **2008-2009**

Leader subcommittee – 26/11/2008



# 1) State of play and current steps:



European Commission  
Agriculture and Rural Development

- **Coordination Committee first meeting:**
  - First meeting on **1st October** (input to thematic work and annual work programme)
- **European Conference on RD: Cyprus, 16-17 Oct (public launch)**
- **Leader sub-committee first meeting: 26 November**
- **Progressive launching of the services and tools of the Contact Point**

## 2) Creation of thematic groups



European Commission  
Agriculture and Rural Development

### Proposals:

- To launch 2 groups as soon as possible (themes 1 and 2), a third one later (theme 3).
- Targeted size: 10 members
- To leave a sufficient margin of manoeuvre to the group itself.
- To ensure a review of the mandate by the CC after one year.



# Proposed themes for the thematic groups



European Commission  
Agriculture and Rural Development

## **Theme 1: Targeting territorial specificities and needs in RD programmes**

(An efficient targeting of territorial specificities and needs in RD programmes and a more balanced development of rural areas across Europe)

## **Theme 2: Agriculture and the wider rural economy**

(Identification and description of the relationships and potential synergies/conflicts between, on the one hand, agriculture and, on the other hand, the wider rural economy).

## **Theme 3: Public goods and public intervention (for later launch)**

(How RD interventions can enhance the provision of public goods for the benefit of society).

# Thematic group's general mandate



European Commission  
Agriculture and Rural Development

## 1) Conceptual framework :

- definition of concepts used in the group
- refinement of the group's theme.

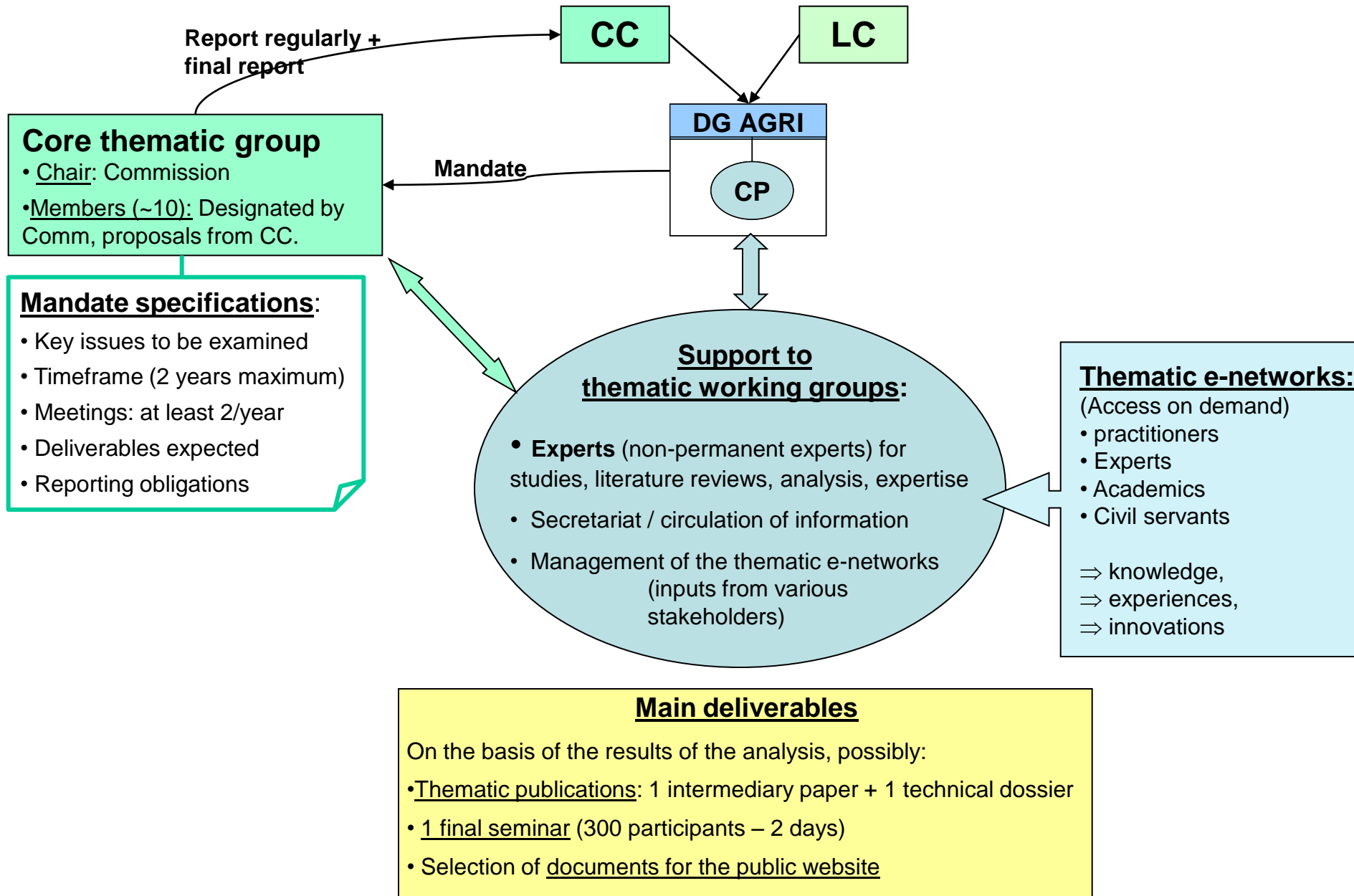
## 2) RD programmes:

- Review of experiences
- Identification of best practice/innovative approaches
- Identification of success stories/failures
- Recommendations and guidance.

## 3) Broader expertise

- Exchange of knowledge/expertise
- Possibly, recommendations for RD policy at EU level
- Identification of needs for further thematic work

# Activities and mandate of the thematic groups of the EN RD





## 3) Specific seminars



European Commission  
Agriculture and Rural Development

- Seminars 2009:
  1. **Seminar on « Capacity building – setting-up of the national networks »** (1st trimester 2009)
  2. **Seminar on « Innovation for the new environmental challenges »** (2d semester 2009 – to be confirmed), as an operational workshop to contribute to enhance the successful integration of environmental concerns in the RD programmes, notably those related to the new challenges (climate change, renewable energy, water management).
  3. **Seminar on « Modernisation of semi-subsistence farms »** (2d semester 2009 – to be confirmed), as a case-study for the thematic working groups (in relation with territorial targeting / interlinks with the wider rural economy; delivery of public goods).

## 4) An expert group on Policy delivery and governance



European Commission  
Agriculture and Rural Development

A group of experts shall:

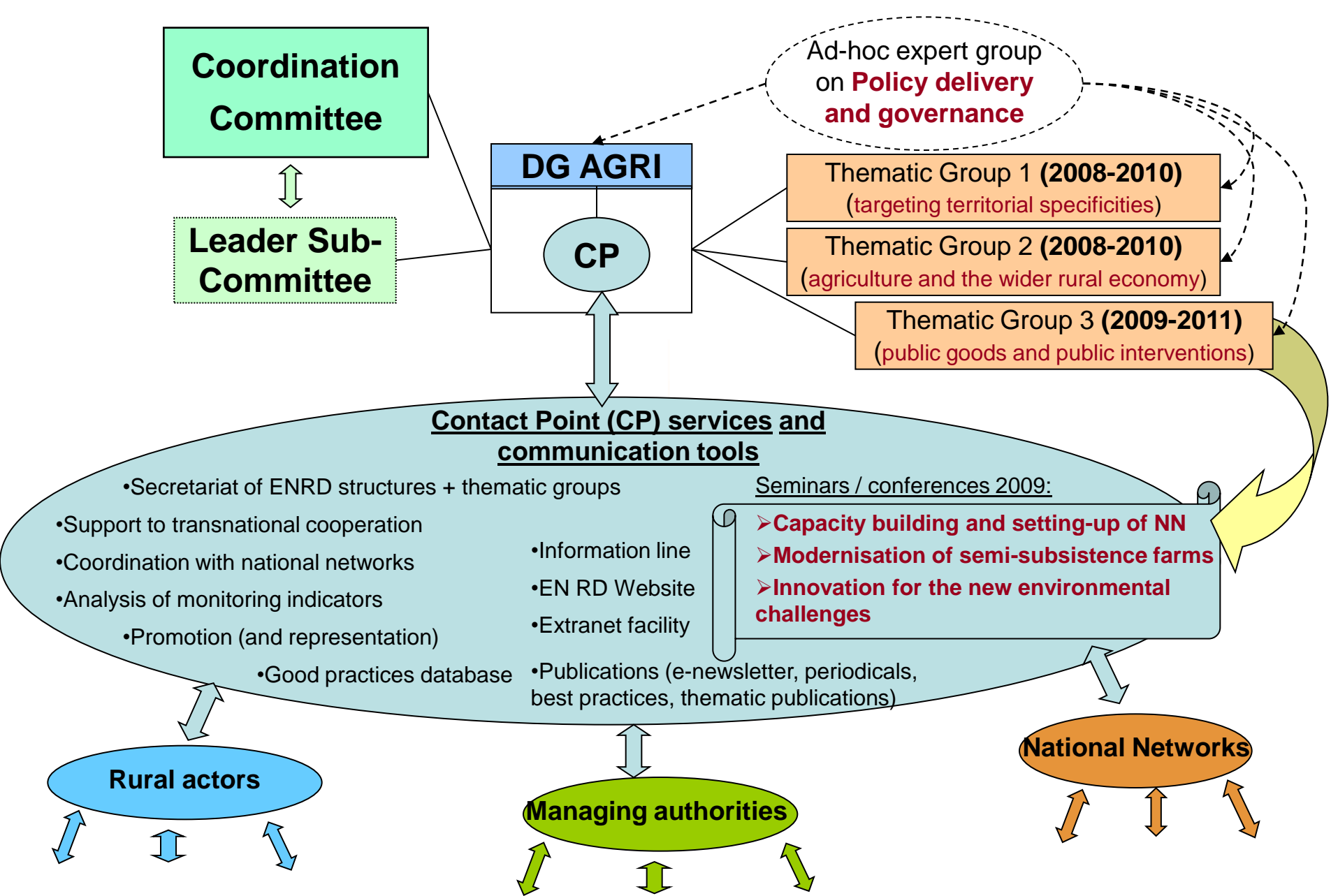
- work on the identification of efficient delivery mechanisms and good practices in the implementation of RD programmes;
- describe the lessons learned with respect to improving governance of RD policy.

It would work in parallel with the thematic working groups, using their results and providing them with insights on delivery mechanisms and governance.

Its action plan would be drafted by the Commission.



# Overall view of the specific thematic activities 2008-2009





European Commission  
Agriculture and Rural Development

# Thank you for your attention