



The pulse of medieval towns, the beauty of nature, the cultural and industrial heritage in the Heart of Slovenia

A tour of good practices in the area of the Heart of Slovenia Local Action Group

Kamnik, Saturday, 8 September 2018

In the Heart of Slovenia, the history of the landscape, the wealth of the forests, the fertility of the soil and the energy of the water and people have created the unique power of the countryside through time. This power is connected with stories about medieval towns, the beauty of the natural, cultural and industrial heritage, the preserved joy of socialising in many towns and at many events. Here, tourism is based on preserving authenticity.

9:15

Departure of the group from Terme Snovik (<https://goo.gl/maps/s8XpUVGe2Kn>). Stop at Dom kulture in Kamnik (<https://goo.gl/maps/3JW5cEGnKnF2>), where the remaining participants get on the bus. Drive to Litija.

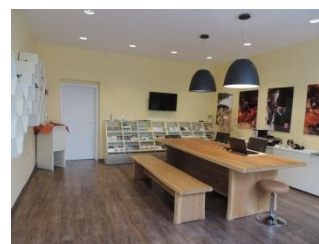
10:30

The first inhabitants settled Litija as early as 4,000 years ago. The navigability of the Sava River enabled them to explore the nearby riverbanks. From the very beginning until the mid-20th century, ores were exploited and smelted here. Thus Litija, with its 6,500 inhabitants, is the oldest Slovenian mining town. At the beginning of our exploration, we will stop in the old town centre and **visit the Tourist Information Centre**, which started to operate with the help of EU funds from the Heart of Slovenia Local Action Group. Our hosts will introduce their current project The Heritage Connects Us, co-financed by EU funds.



11:15

In December 2017, a part of the **Sitarjevec Mine in Litija** was opened for tourism purposes. The mine was mostly mined for lead and mercury ore. The Litija mine is one of the largest ore deposits in Slovenia. Material sources about ore exploitation in the area of Sitarjevec date back to the 3rd millennium BC. Later on, the Celts and Romans also mined this area. They also mined ores that included zinc, copper, iron and, in the end, particularly barite. The mine is hiding unique limonite speleothem structures, such as stalactites, stalagmites, curtains and tubular stalactites, which are unique in Europe and are among the fastest growing on a worldwide scale. Over 60 different minerals can be



found in the mine. By meeting basic conditions for opening the mine for tourism purposes (EU funds of the Local Action Group), further development of the contents has been enabled, together with the long term want to establish an open educational environment of national and European importance.

12:45

In the immediate vicinity of Litija is the countryside mansion **Bogenšperk Castle**, where polyhistor Janez Vajkard Valvasor lived and worked in the 17th century. A Slovenian by heart, a European in spirit. The castle stands on a hill where marvellous panoramic views of Lower Carniola hills open up (Lower Carniola is the southeast region of Slovenia). With the help of EU funds, the castle gained additional content and recognition as a cultural and tourism destination. In such a manner, the castle and its surroundings gained additional sustainable and future-oriented content and the Heart of Slovenia, as a rounded tourism area, an important and more goal-oriented offer for visitors. Various events take place at the castle all year round. This is a spot where young couples can exchange their wedding vows.

14:15

The route will lead us back to the foothills of the Kamnik alps, but prior to that we will stop at the tourist farm in Dolsko, which represents the last surviving example of an operating supply centre along the former cargo route and navigable waterway on the Sava river and as such the only object of cultural heritage of its kind in the Heart of Slovenia. Many objects, tools and other devices from previous generations have been preserved in the framework of the homestead. With the help of the Department of Ethnology and Cultural Anthropology of the Faculty of Arts in Ljubljana, the owner has organised this collection appropriately. With the Setting up of the Ethnological Collection in the Pr' Krač Tourist Farm project, which was co-financed with EU funds, this point of heritage was even further revived and got an important additional offer. The presentation will be followed by **lunch**.

16:00

Full of new experiences from discovering the industrial and cultural heritage in the tourist offer of the Heart of Slovenia LAG, we will head to the traditional ethnological event **Days of National Costumes and Clothing Heritage in the medieval town of Kamnik**.

We recommend wearing comfortable footwear and warm clothes as the Sitarjevec mine has a constant temperature of 10 degrees Celsius.

Information:

Mitja Bratun, LAS Srce Slovenije

Mobi: 051 311 554

The organiser of the professional field trip is the Heart of Slovenia LAG.

